

Passat B6 / 3C Factory Footwell Light Install

Updated March 6, 2011



Written by angelico.

Please contact me on vvwortex if you have questions or see a change that needs to be made.

Notes:

As far as I know, most B6 Passats come only with front footwell lights, many CC's do not have any. This write up will help you add factory footwell lights to cars that don't have them. This may also work for many of the Mark V cars.

I don't have a lot of pictures of the install since my car already had the front lights. I did add rear footwell lights so special thanks goes out to *tmuscat* for this thread: <http://forums.vvwortex.com/zerthread?id=2792313>

Overall, this project should not take a lot of time, it is probably easier to put the front ones in than the rears. The rear lights require contorting your body to weird angles to make everything fit under the driver's and passenger's seats, you also need to remove the side sills to run the wires neatly. Although the rear lights are a bit of a pain to put in, they are well worth it; however, I will not be describing all of the steps for those. Basically, you just need to tap into the front ones and put them in the holes that are already there.

Great post from NewVWB6er: <http://forums.vvwortex.com/showthread.php?5203783-Passat-Rear-Ambient-Footwell-Lights-Mod&p=70196668&highlight=footwell#post70196668>

Also note that you can now have them ON while driving by changing the first Bit of Byte 16 in 09-Cent. Elect to "1". This works best with incandescent bulbs since most LEDs don't dim very well.

Thanks to: *Ween2010, Costy, NewVWB6er, and VdubTX.*

Parts list:

Front only:

1x repair wire 000 979 150
2x footwell lamp holders 7L0 947 415
2x connectors 1J0 972 923
2x repair wire (pins for connectors) 000 979 133
20 gauge wire
solder and tool
wire heat shrink
splicing connectors
Ross Tech VCDS (Vag-Com)

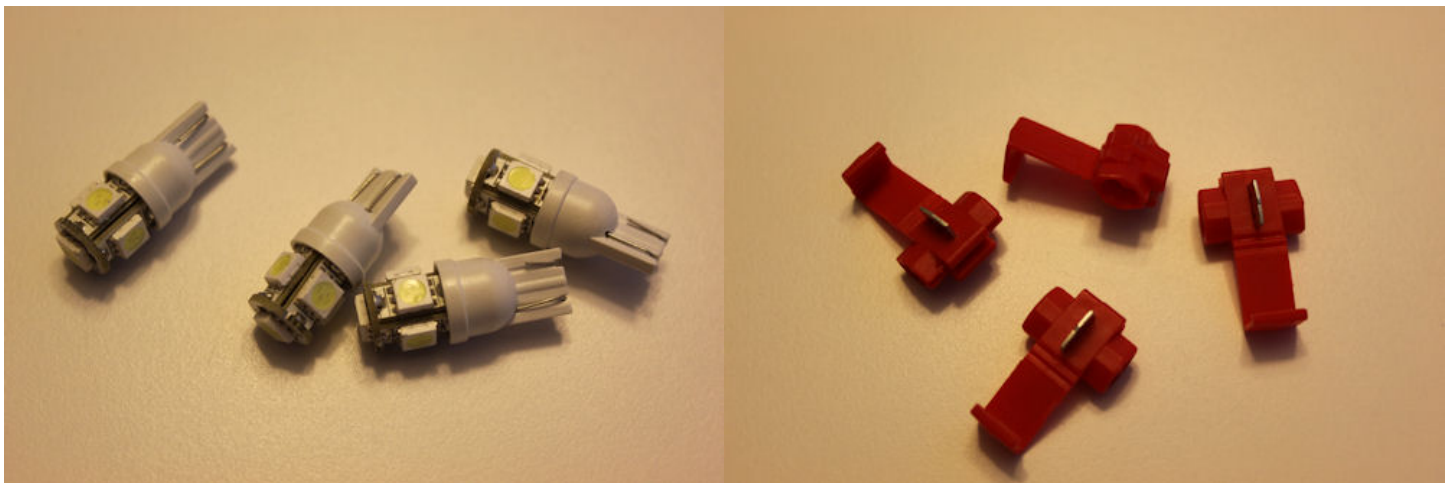
Front and Rear:

1x repair wire 000 979 150
4x footwell lamp holders 7L0 947 415
4x connectors 1J0 972 923
4x repair wire (pins for connectors) 000 979 133
20 gauge wire
solder and tool
wire heat shrink
splicing connectors
Ross Tech VCDS (Vag-Com)

Rear Only:

2x footwell lamp holders 7L0 947 415
2x connectors 1J0 972 923
2x repair wire (pins for connectors) 000 979 133
20 gauge wire
solder and tool
wire heat shrink
splicing connectors

Although the lamp holders come with bulbs, I recommend installing LEDs. I used 5-LED white 194's like the ones pictured below with no problems. Some members have reported "bulb out" errors so you may need a 25W load equalizer. I purchased an LE from <http://autolumination.com/equalizers.htm> but didn't need it in my '09 B6.



Wiring for the footwell lights:

I have not included wire lengths because I don't know how long they need to be, remember wire is cheap so start long and cut it down later.

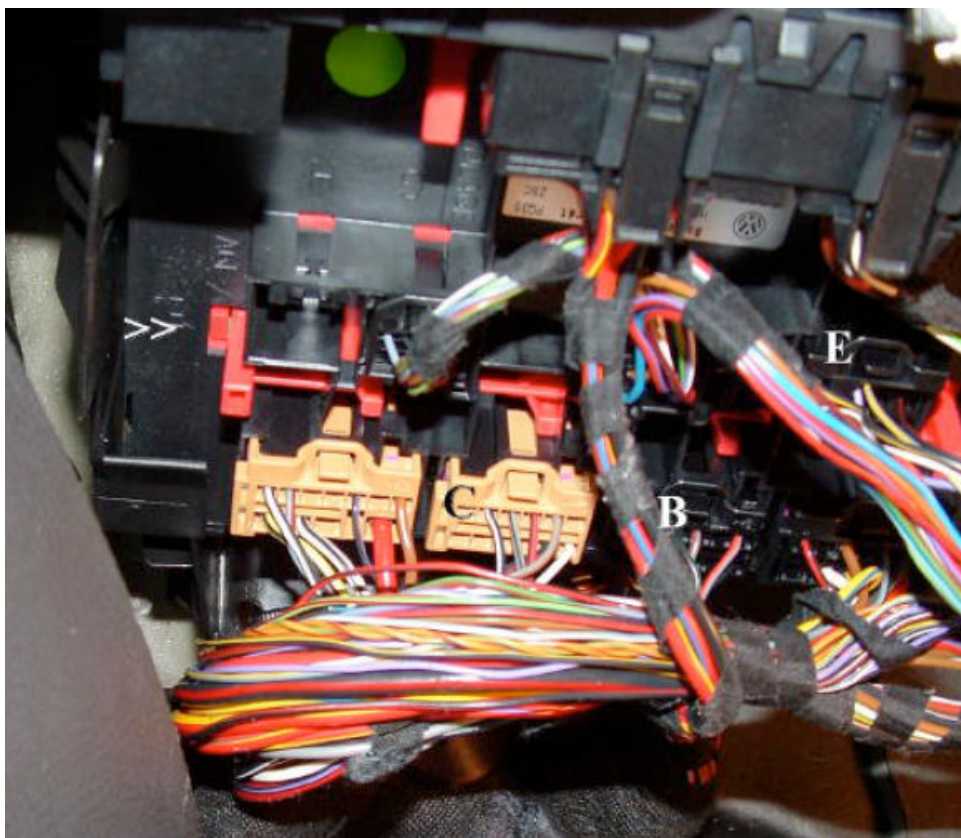
Cut repair wires 000 979 133 in half and insert them into connectors 1J0 972 923.



Looking at the connector from this angle, VW typically puts the ground or negative side on the left. You don't have to but we're trying to make it look factory...



Follow the directions here for accessing the connector shown in the picture below, <http://forums.vwvortex.com/zerothread?id=2290044>.



Half of repair wire 000 979 150 connects to pin 7 of the black connector labeled “B” in the above picture and then to the positive side of the light connectors. The ground or negative side can be hooked up to any brown or ground wire, there is a good spot behind the panel by the hood release.

Link for hood release removal

<http://forums.vwvortex.com/zerothread?id=4346967>

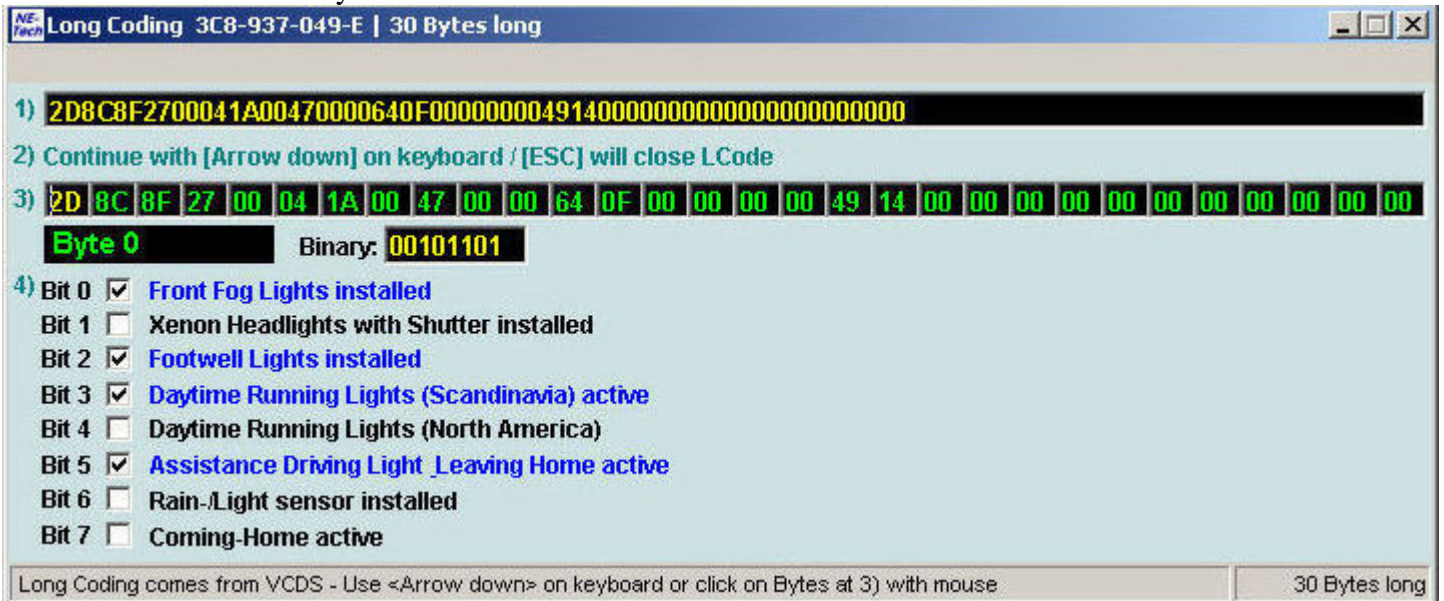
While you’ve got the side panel off, it’s a good time to run the rear footwell lights and install things like metal pedals / foot rest ☺. The side scuff guards can be taken off by gently pulling up on them to release the clips.



The easiest way to connect the other light (or 3) is to daisy chain them to the first one with splicing connectors. If you take the lamp connectors and solder 10ft (or more) of extra wire on the repair wires, you can feed them from their appropriate spot and back to where they need to connect. So the passenger light would go to the driver’s light, the rear passenger would go to the front passenger and the rear drivers side would also go to the driver’s light.

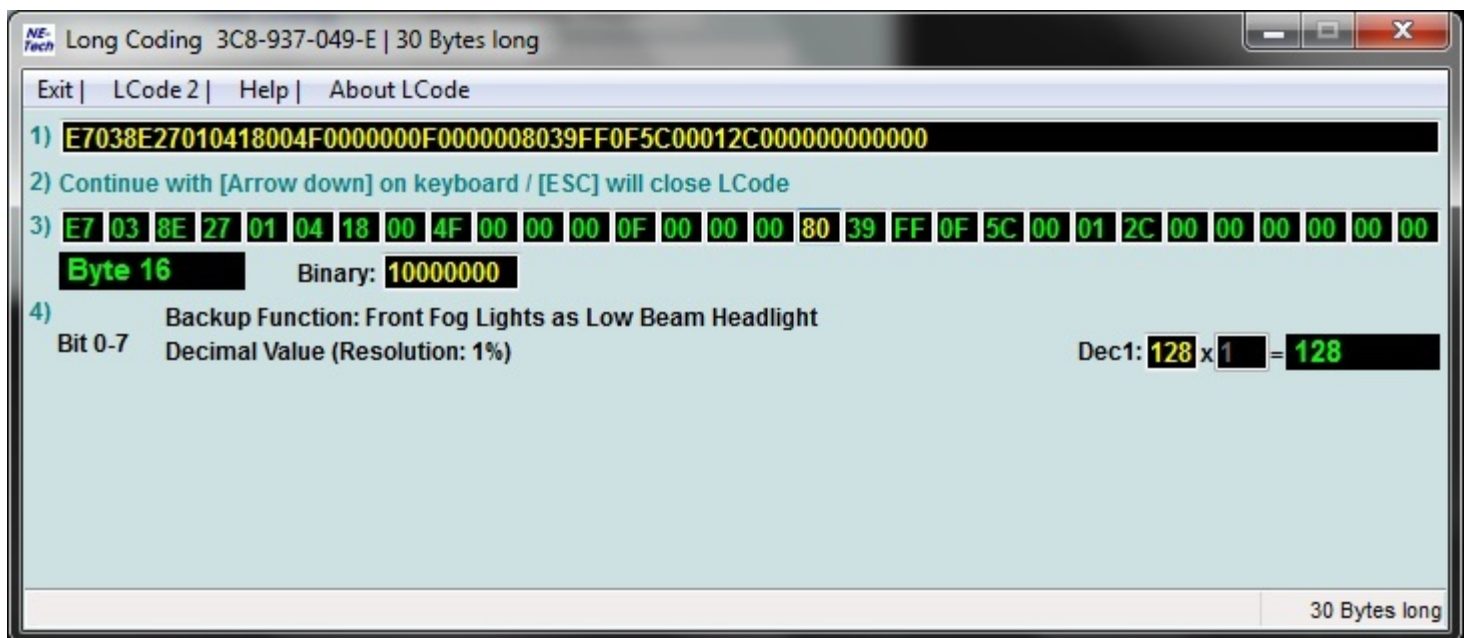
VCDS settings:

Because we are doing “factory style” and not just “hack and slash” you will need to activate the footwell lights in VCDS. It is on Bit 2 of Byte 0 in 09 – Central Electronics.



You may then set the intensity through the MFD, with the LEDs I like it at 100%.

If you want them on while driving set Bit 1 of Byte 16 to “1”, for most people this will be 80 decimal or 128 Hex. The brightness can be adjusted with the rheostat for dimming the other interior lights, this works best with incandescent bulbs but there are certain LEDs that will work.

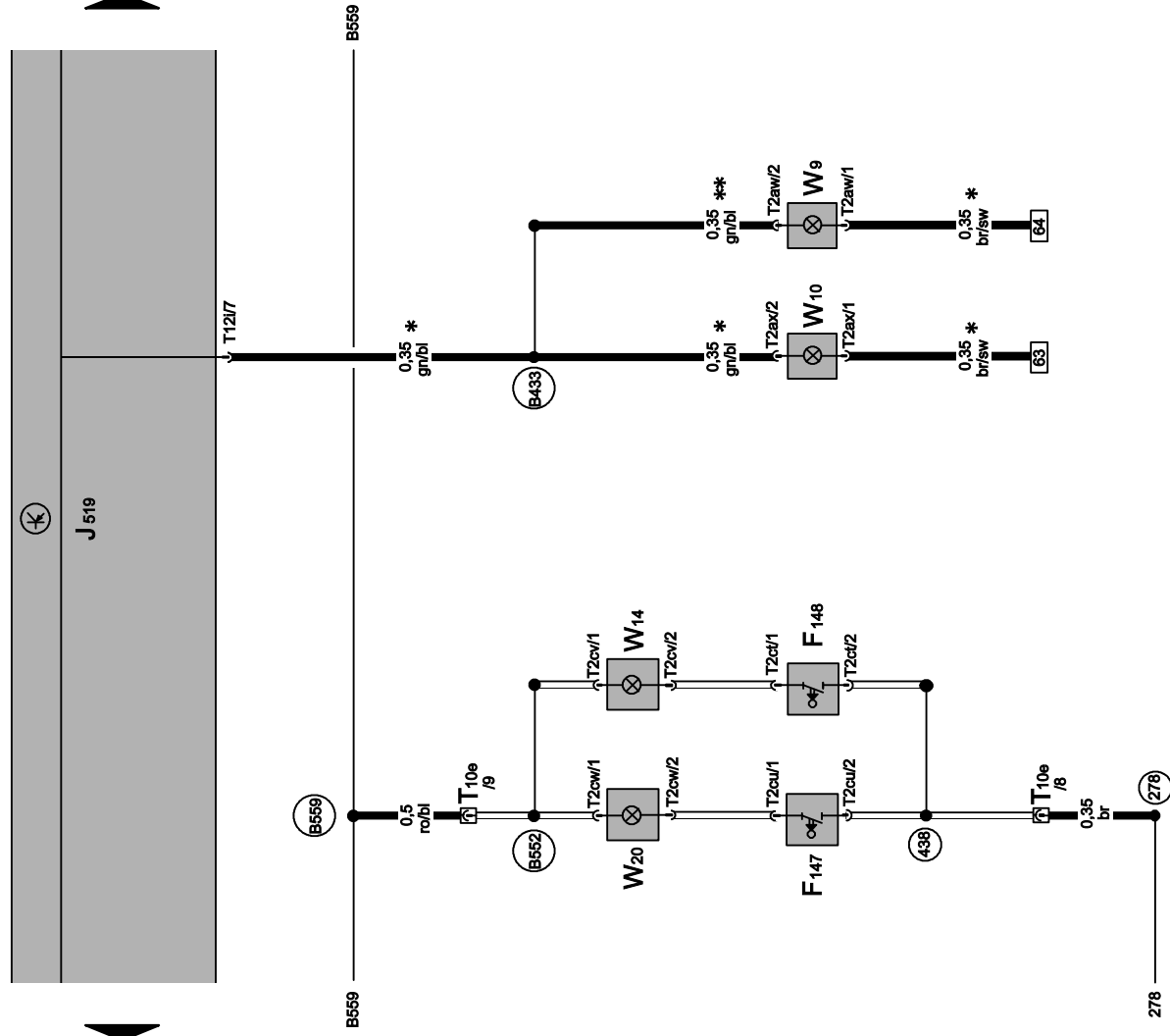


Driver's and Front Passenger's Make-Up Mirror Light Contact Switch, Glove Compartment Light

- F147 Driver's Make-Up Mirror Light Contact Switch
- F148 Front Passenger's Make-Up Mirror Light Contact Switch
- J519 Vehicle Electrical System Control Module
- T2ct Double Connector
- T2cu Double Connector
- T2cv Double Connector
- T2cw Double Connector
- T10e 10-Pin Connector, blue, connector station roof
- T12i 12-Pin Connector, black
- W9 Left Footwell Light
- W10 Right Footwell Light
- W14 Front Passenger's Illuminated Make-up Mirror
- W20 Driver's Illuminated Make-up Mirror

- (278) Ground Connection 4 (in passenger compartment wiring harness)
- (438) Ground Connection 3 (in roof wiring harness)
- (B433) Footwell illumination Connection (in main wiring harness)
- (B552) Plus Connection 2 (in roof wiring harness)
- (B559) Plus Connection 1 (30g) (in main wiring harness)

□ *
Only models with Footwell Illumination



ws = white
 sw = black
 ro = red
 br = brown
 gn = green
 bl = blue
 gr = grey
 li = lilac
 ge = yellow
 or = orange
 rs = pink

267	268	269	270	271	272	273	274	275	276	277	278	279	280
357-002211008													